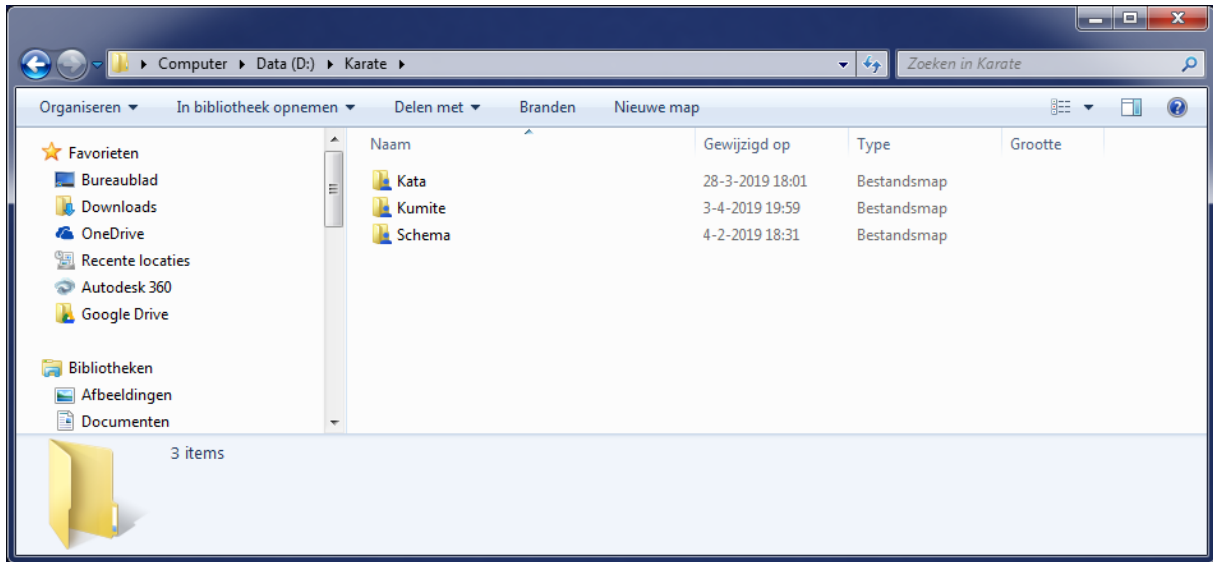


## Creating data folders and using them

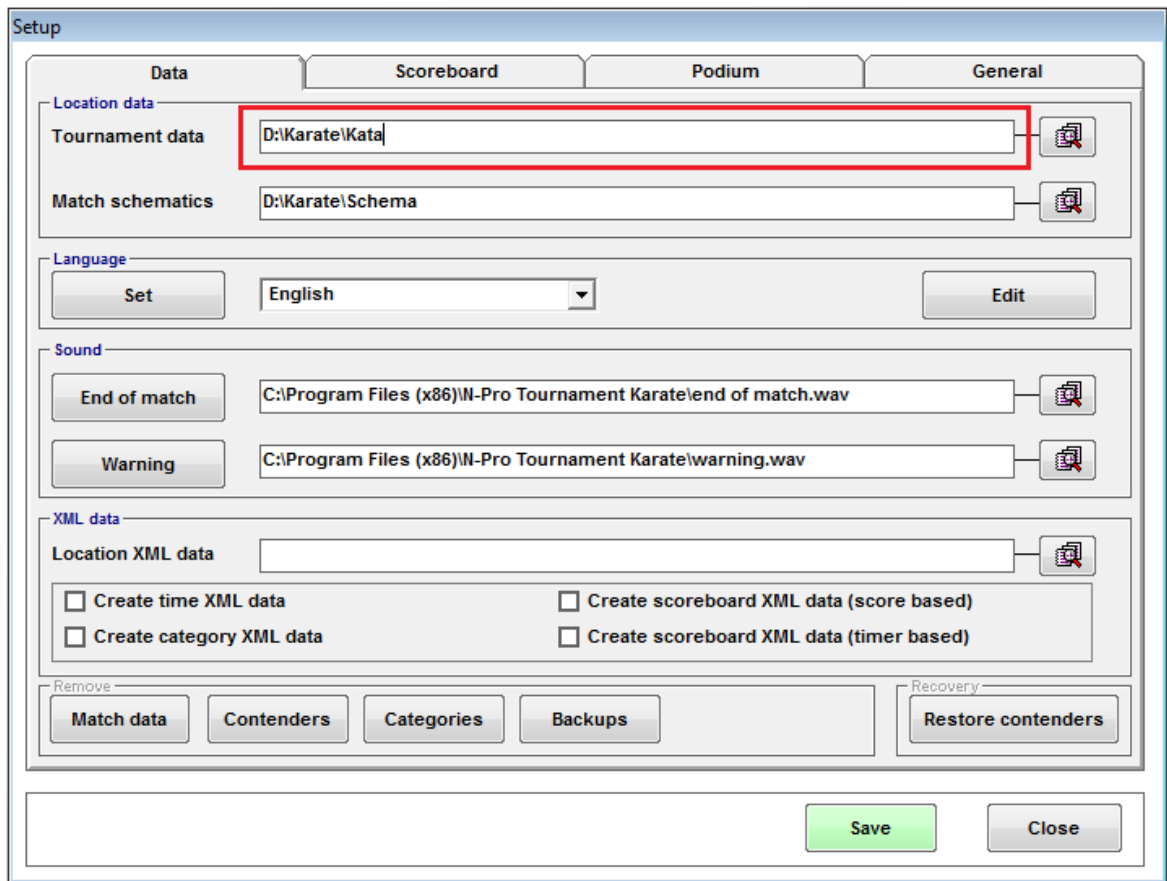
The first thing you need to do is not creating the data folders in the installation directory of the software. I would have created them on a network drive, or on an other place on the harddisk.

Placing them in the installation folder can create problems. [http://software.n-pro.nl/index.php?ind=downloads&op=entry\\_view&iden=115](http://software.n-pro.nl/index.php?ind=downloads&op=entry_view&iden=115)

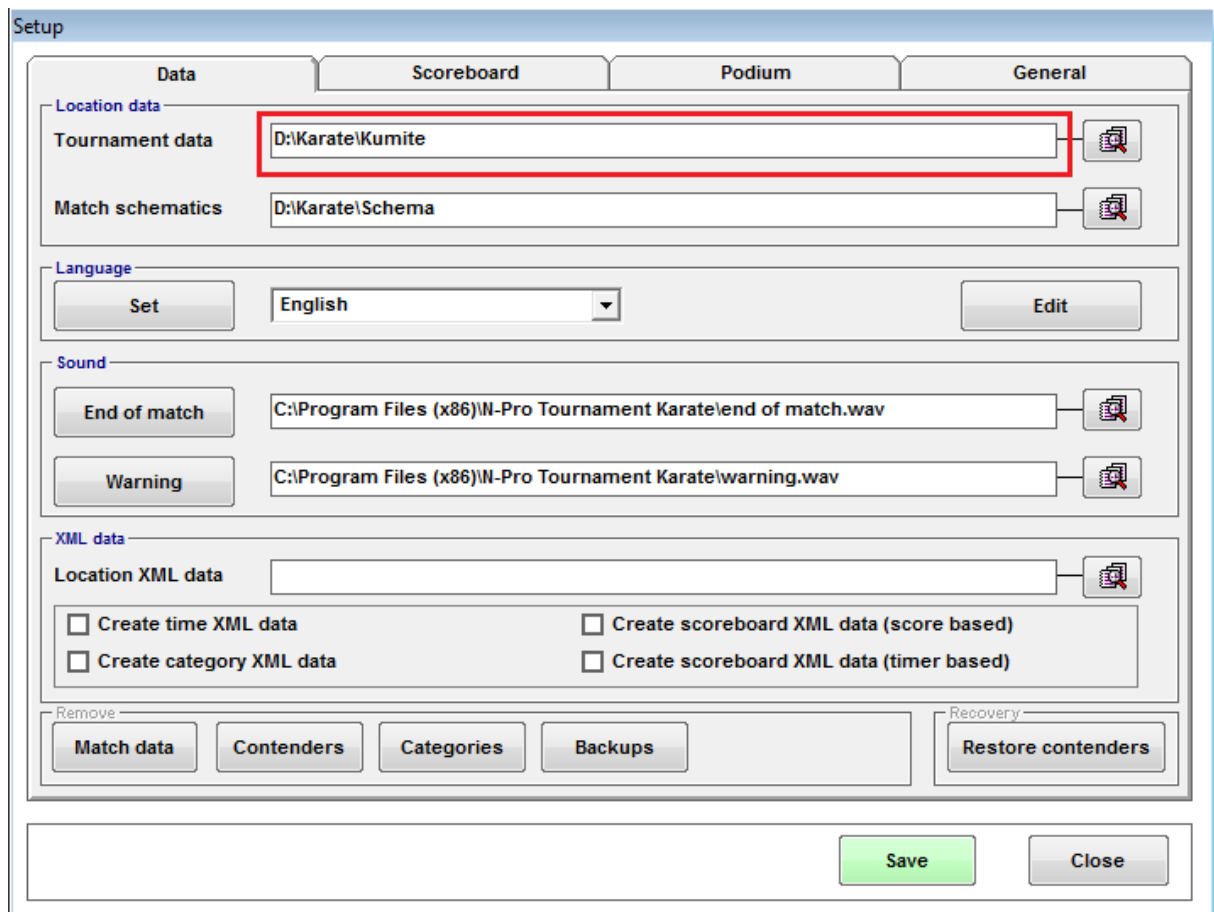
For example it can be done this way:



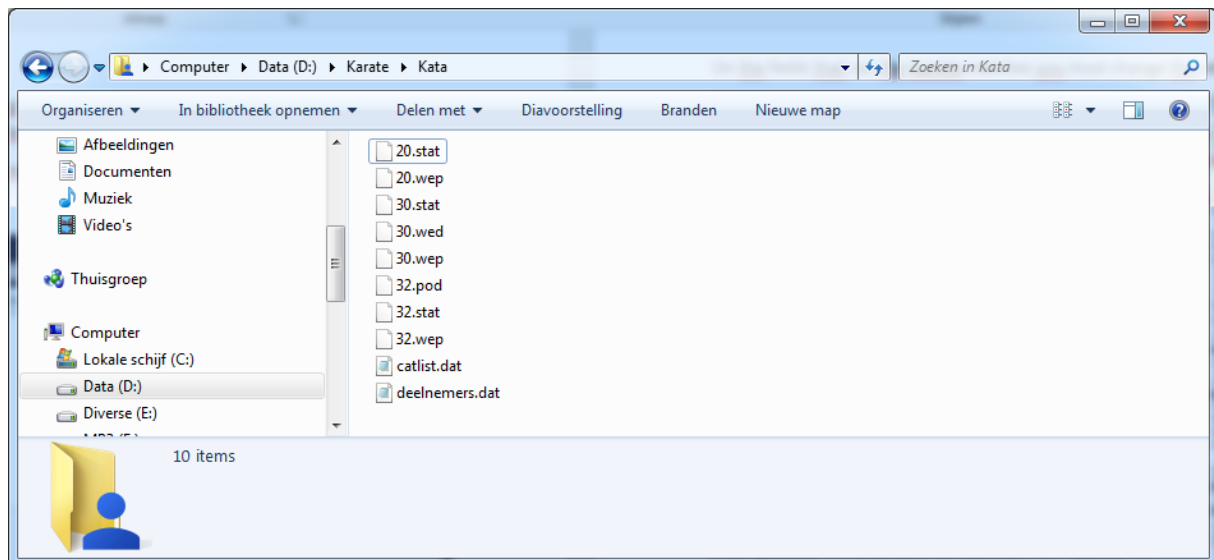
On the fields that run the kata matches you must change the setup like this:



On the fields that run the kumite matches you must change the setup like this:



Make sure that the kata and kumite folder contain the deelnemers.dat file and the catlist.dat file.  
 This can be a file with only kata or kumite contenders or this can be the complete data.



As you can see in the example above N-Pro tournament creates files of the match data and the podium data.

The .wed data is the match data of the flag system

The .wep data is the match data of the point system

The .pod data are the podium places.

When collecting the data for the podium places and the medal standings, only the data that is available in the folder that setup is pointing to, will be read.

It is also possible to keep all data in one folder, and after all matches are done, you can copy the podium data (.pod files) of kata to one folder and the podium data from kumite tot the other folder. This also works fine.

You do not need the XML Data. It is only for external programs to be used (such as websites)

I recommend not to use it if you do not have any external applications that need this data. (and i'm pretty sure you don't)